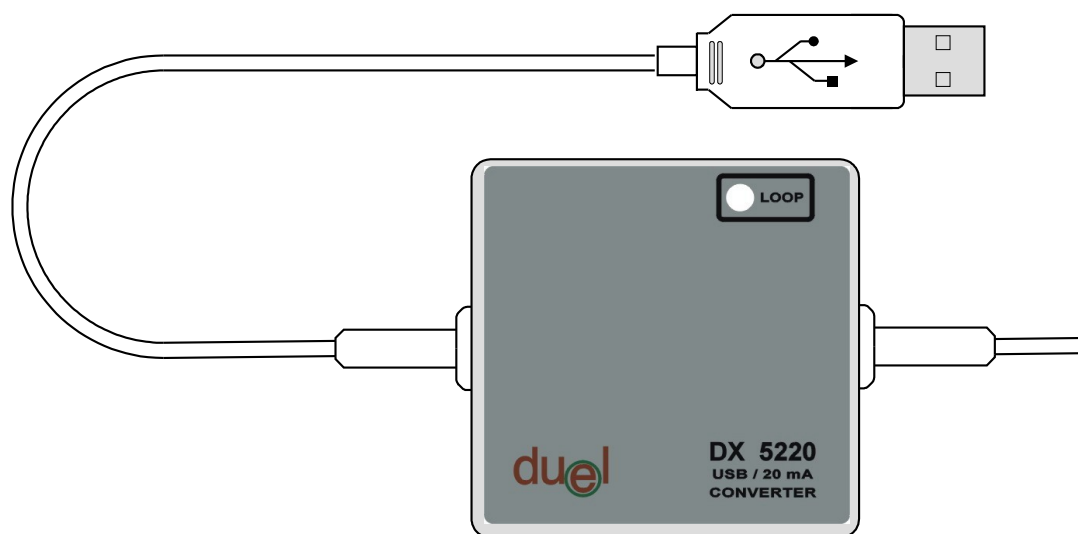


USB / 20mA converter

# DX5220



## *User manual*

Námestovo, March 2008

## Content

1.Introduction.....	3
2.Device service.....	3
2.1 Converter description.....	3
2.2 Driver installation.....	4
3.Technical data.....	6
Data sheet.....	6
Operating ambient conditions.....	6
Warranty.....	6

# 1. Introduction

Converter DX 5220 (in next converter) is designated to convert current loop states to the signals read by Universal Serial Bus (USB) which is widespread nowadays and is easy accessed especially for notebooks. Together with convenient software converter can easy monitor and modify the function of regulating systems, which prefer (support) the current loop transfer.

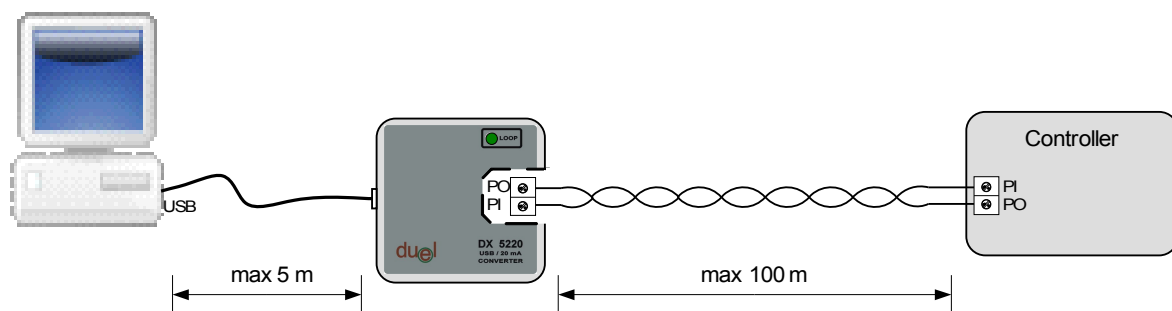
## 2. Device service

### 2.1 Converter description

The converter itself is fixed in plastic box and has a green Led Emitting Diode (LED) as a process status. If the LED shines, the current loop is closed (current flows). The converter is fed from the USB power supply, so no external power supply is required.

USB port connection is established by standard USB connector (type A) with length cca 20 cm.

The current loop connection is made by screw driven connector (in normal state is hidden under the plastic box cover). The correct polarity connection can be seen according to the status of the LED. If it shines – correct connection, if it is dimm the wires should be exchanged.



*Obr.1 Converter connection*

Before the first use of the converter is generally necessary to install device driver. The driver support operating systems Windows 98, ME, XP and XP64.

## 2.2 Driver installation

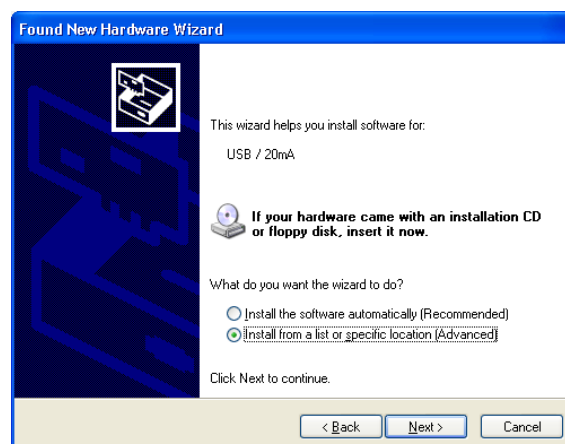
In next text the driver installation for **Windows XP** is will be showed in detail:

- 1) Connect the USB converter to USB port of the computer
- 2) After a while the New Hardware Wizard window should appear

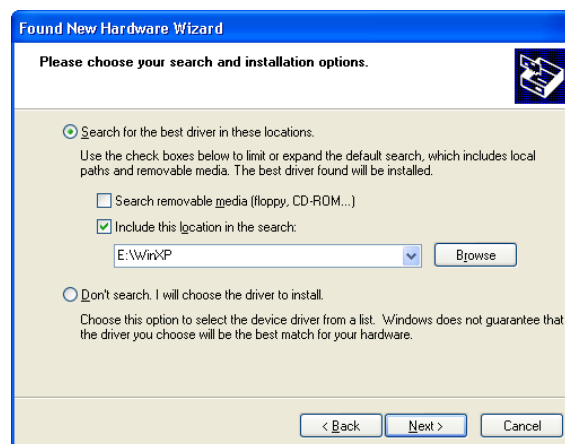


Choose the figure depicted selection and then click „Next“.

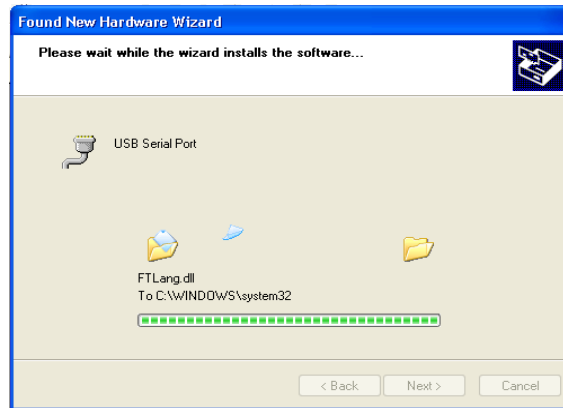
- 3) Next window shows „Install from a list or specific location“ and again the „Next“ button



- 4) Next window define the driver location for Win XP, for example : „E:\winXP“ if the CD with driver is loaded into E drive



- 5) After a while the information window appears and the files are being copied

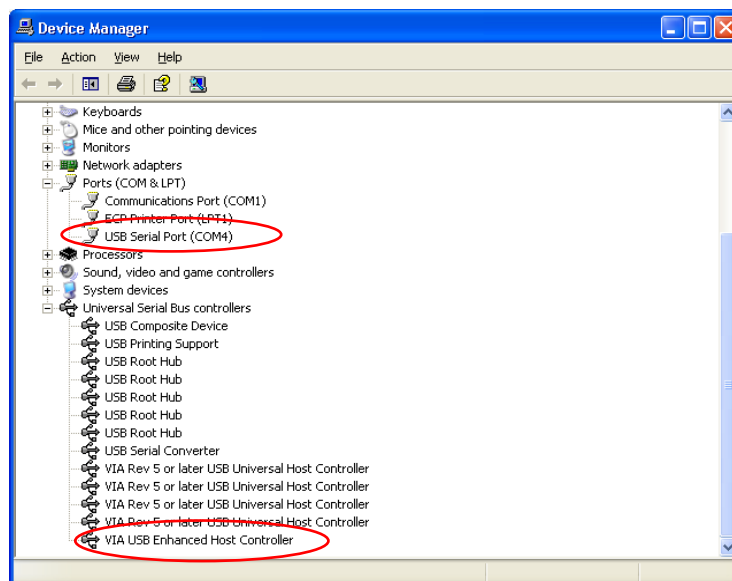


- 6) To continue press „Finish“.



- 7) Few seconds later the window New Hardware Wizard again is being displayed. Repeat the steps 2 till 6. After doing that the driver installation is completed.

Successful instalation can be checked in „Control panel\System\Hardware\Device Manager“.



### 3. Technical data

#### **Data sheet**

Power supply:	5V DC from USB port
PC connection:	USB v2.0 or v1.1 fro USB standart
Current loop connection:	2 clamps (PI, PO), galvanic insulation with opto-couplers
Baud rate:	300 .. 19200 Bd (max)
Incorrect connection protection:	100V / 1A
Current loop status information:	green LED
Dimensions:	50(W) x 50(H) x 20(T) mm

#### **Operating ambient conditions**

Ambient temperature:	from 5 to 50 °C
Air humidity:	max. 80% @ 30°C
Atmospheric pressure:	from 70 to 106 kPa

#### **Warranty**

- Producer provides 36 month guarantee from expedition day
- Guarantee covers only defect, which happened during normal operation, it does not cover faults caused not trained person, incorrect storage, improper environment and activities of high power (spontaneous disaster, rendering, fire, atmospheric discharge and so on).
- User loses warranty at units repaired by not trained person
- Warranty service provides producer (manufacturer)